

CABLE 354 RF: SMA R/A MALE PLUG + S/S SMA FEMALE STRAIGHT BULKHEAD JACK W/O-RING RATED TO IP68/69K + RG178 CABLE

SPECIFICATIONS :

1. SMA RIGHT ANGLE PLUG, GOLD PLATED, P/N: RFCT-SMA025-M78.
2. COAXIAL CABLE, SEE P/N OPTIONS FOR DETAIL.
3. SMA STRAIGHT BULKHEAD JACK W/O-RING, W/SUS303 STAINLESS STEEL BODY, TESTED TO IP68/69K, P/N: RFCT-SMA061-F78 (WITH SILICON O-RING) OR RFCT-SMA061-F78-1 (WITH EPDM O-RING).

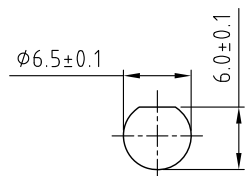
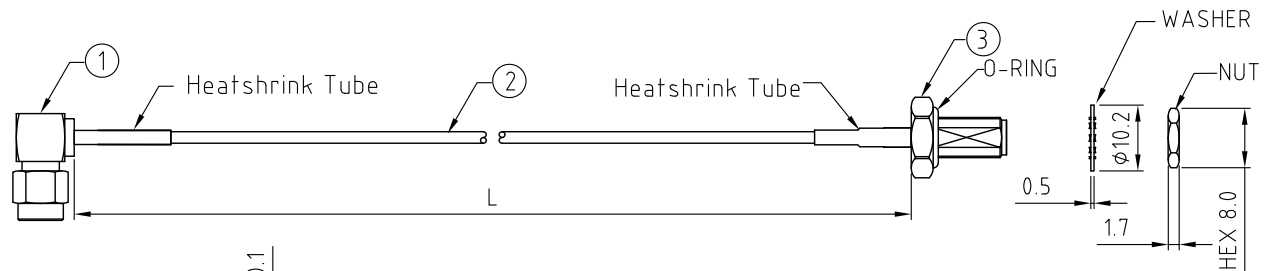
ENVIRONMENTAL:

A. BULKHEAD MOUNTED CONNECTOR (RFCT-SMA061-F78) TESTED TO THE FOLLOWING SPECIFICATION:

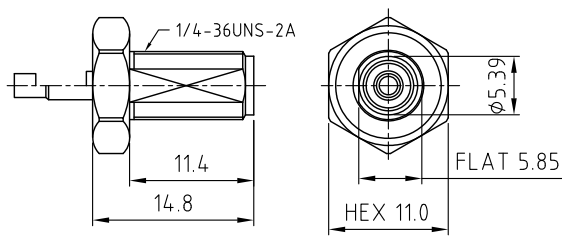
- i. IP6X - DUST TIGHT - NO PARTICLE INGRESS.
- ii. IPX8 WATERPROOF FOR 48 HOURS AT 1 METER UNDERWATER.
- iii. IPX9K WATER SPRAY, 14-16L PER MINUTE, AT 8,000-10,000 KPA, AT 100-150MM DISTANCE FOR 30 SECONDS.

NOTES:

1. THE ORIENTATION OF CONNECTORS ON DRAWING IS FOR REFERENCE ONLY, IF THE ORDER IS LEFT BLANK THE CONNECTOR WILL NOT HAVE FIXED ORIENTATION.
2. FIXED ORIENTATION IS SUGGESTED FOR CABLE LENGTH 25MM TO 100MM. PLEASE SPECIFY THE FIXED ORIENTATIONS FROM THE ORDER CODE (F1, F2, ETC)
3. CONTACT GRADCONN IF THE ORIENTATION YOU REQUIRE IS NOT SHOWN.
4. WORKING FREQUENCY RANGE: DC-3GHz.
5. OPERATING TEMPERATURE: -40°C TO +125°C
6. IMPEDANCE: 50 OHM
7. IF THE CONNECTOR IS USED IN A CORROSIVE ENVIRONMENT, WE RECOMMEND THE CONNECTOR FACE IS PROTECTED WITH A STAINLESS STEEL DUST CAP.
8. PLEASE USE THE RECOMMENDED TORQUE FORCES FOR STAINLESS STEEL CONNECTORS. THIS IS PUBLISHED ON GRADCONN.COM RESOURCES PAGE.



RECOMMENDED SMA MOUNTING HOLE



SMA JACK DETAIL DRAWING

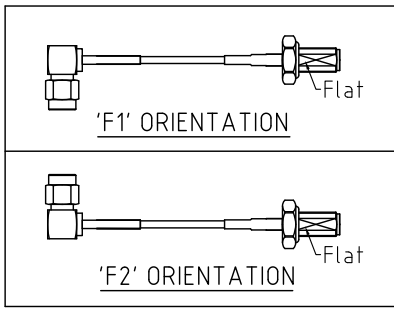
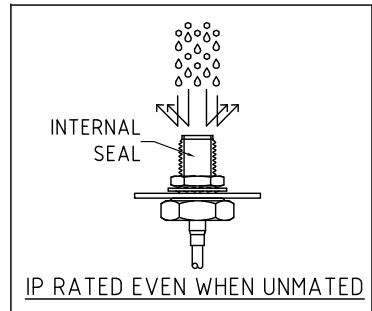
HOW TO ORDER
CABLE 354 RF - XXXX - XX - X - 1 - X

"L" LENGTH IN MM:
eg: 100MM = 0100
(MIN. 0050-MAX.2000
STANDARD = 0100, 0150, 0200)
Tolerance: 50mm: ±2mm.
51-200mm: ±5mm.
201-500mm: ±7mm.
>501mm: ±10mm.

O-RING MATERIAL OPTIONS:
S = SILICON, RED (STANDARD)
E = EPDM, BLACK
CABLE SIZE:
1 = RG178 CABLE, COLOR: BROWN.

WASHER AND NUT OPTIONS:
BLANK = SEPARATELY PACKED (STANDARD)
A = ALL ASSEMBLED WITH CONNECTOR

ORIENTATION OPTIONS:
BLANK = DOES NOT HAVE A FIXED ORIENTATION
F1 = SMA PLUG CONNECTION DOWN (L=50-200MM)
F2 = SMA PLUG CONNECTION UP (L=50-200MM)
(SEE NOTES 1, 2, 3 AND DIAGRAMS FOR MORE INFORMATION)



REV. DATE & DRN
10 28/09/19 - NYW RELEASE
11 06/06/20 - NYW
12 26/04/20 - NYW
13 27/04/21 - NYW
14 01/07/21 - NYW
15 19/07/21 - NYW
16 21/02/22 - NYW
17 24/05/24 - CC
ADD IP RATING VIEW

Scale: NTS	THIRD ANGLE	Unstated Tolerances:
Drawn: CC		.X N/A
App'd: XXX	Title CABLE ASSEMBLY	.XX N/A
Date: 24 MAR. '24	Revision: 1.7	.XXX N/A
	Unit: mm	ANGLES N/A



IP Rated RF Products www.gradconn.com

THIS DRAWING IS CONFIDENTIAL AND MUST NOT BE COPIED OR DISCLOSED WITHOUT WRITTEN CONSENT

Type: Cable 354 RF
CABLE 354 RF
Drawing Number:
Sheet 1 of 1
Drawing © E and O E